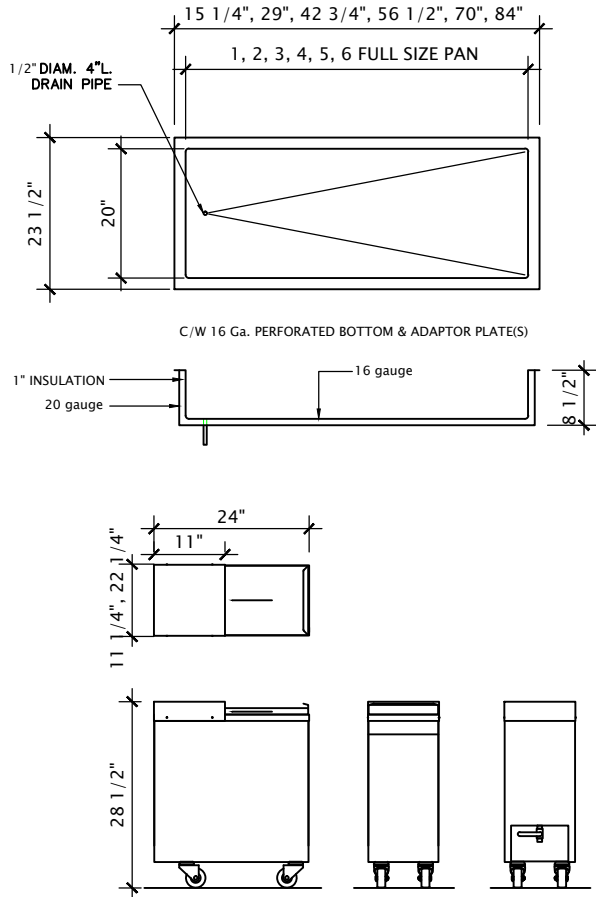


Item No: _____

Model No: _____

Qty: _____

Project: _____



Ice Bins and Pans

- Heavy duty stainless steel interior and exterior construction including lid; mobile units come with 2.5" diameter casters – two with brakes
- Insulated with 1" thick high density foamed in place polyurethane foam for cold air retention
- Removable lid for easy cleaning on Bin style; recessed lid on mobile units; hinged lid on drop in units
- Perforated false bottom on Bin style to reduce ice clumping
- ½" welded in place stainless steel drain; Mobile units with brass ball valve
- Creased interior bottom for complete drainage
- Adapter bars included on Pan Display style; pans not included



Model No.	Capacity	Lid Type	Dimensions W x D x H	Weight lbs.
MOBILE ICE BINS				
IBM-50	up to 75 lbs. Bulk Ice	Sliding	11.25" x 24" x 28.5"	55
IBM-100	up to 125 lbs. Bulk Ice	Sliding	22.25" x 24" x 28.5"	82
DROP-IN ICE BINS				
IBDI-1218	15 lbs.	Lift-up Hinged	11.5" x 18" x 14.5"	40
IBDI-1226	30 lbs.	Lift-up Hinged	11.5" x 26" x 14.5"	45
DROP-IN PAN DISPLAY				
IPD-1	1 Full Size Pan		15.25" x 23.5" x 8.5"	80
IPD-2	2 Full Size Pans		29" x 23.5" x 8.5"	90
IPD-3	3 Full Size Pans		42.75" x 23.5" x 8.5"	110
IPD-4	4 Full Size Pans		56.5" x 23.5" x 8.5"	130
IPD-5	5 Full Size Pans		70" x 23.5" x 8.5"	160
IPD-6	6 Full Size Pans		84" x 23.5" x 8.5"	180

Note: Dimensions for Drop-in models do not include 2" drain below the body of the units. Sizes and Ice capacities nominal, specifications subject to change without notice.



Corporate Head Office
 2780 Coventry Road,
 Oakville, Ontario, L6H 6R1
 Phone: 905-825-9665
 Fax: 905-825-0965
 info@tarrison.com
 www.tarrison.com

US Distribution Center
 150 Gratiot Blvd,
 Marysville, MI 48040
 info@tarrison.com
 www.tarrison.com

US Sales Office
 29 Craftsbury Crest,
 Essex Junction, VT. 05452
 Phone: 802-872-9292
 info@tarrison.com
 www.tarrison.com